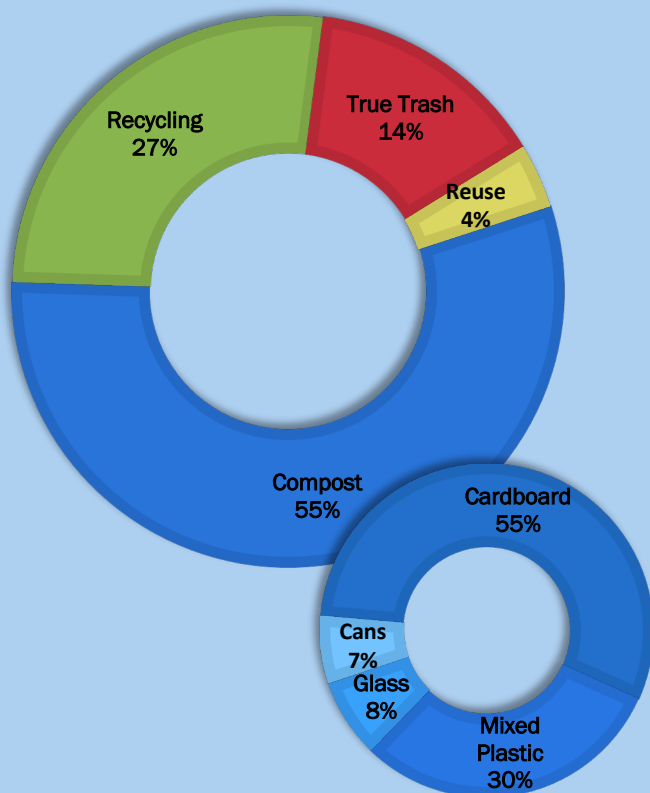


85.82%
Diversion Rate

3,649.4 lbs
Diverted from the
Landfill

Material Breakdown



1128.3 lbs of recycling was taken to:
Athens-Hocking Recycling

624.5 lbs of cardboard

344.1 lbs of mixed plastic

85.6 lbs of glass

74.1 lbs of cans



2,361.1 lbs of compost was taken to
Athens-Hocking Organics



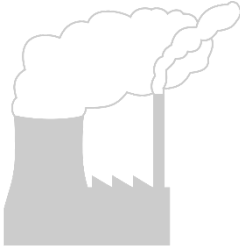
Attendees access to a water refill
station helped eliminate approximately
160 lbs of material from the waste
stream.



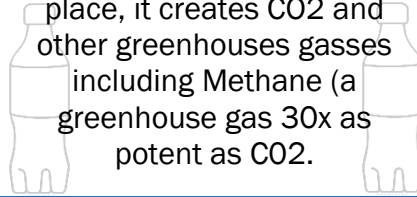
602.9 lbs of true trash was taken to
the landfill

CO2 and Volume Estimates

CO2 is a potent greenhouse gas.



When compostable or recyclable materials end up in the landfill, and new materials are made in their place, it creates CO2 and other greenhouse gases including Methane (a greenhouse gas 30x as potent as CO2).



By recycling and composting at your event, you kept potent greenhouse gases from entering the atmosphere. This is measured in MTCO2E (Metric Tons of CO2 Equivalent). We've converted that into lbs. below:



1,128.3 lbs. of recycling were diverted from the landfill

Saving 4,479 lbs. of CO2 equivalent gasses from entering the atmosphere.

Equivalent to:

Carbon sequestered by 34 trees grown over 10 years.

Or
.44 passenger cars driven for one year.

Or
229 gallons of gasoline

Or
.34 homes' energy use for one year:



2361.1 lbs. of compost were diverted from the landfill

Saving 10,074 lbs. of CO2 equivalent gasses from entering the atmosphere.

Equivalent to:

Carbon sequestered by 117 trees grown over 10 years.

Or
.98 passenger cars driven for one year.

Or
514 gallons of gasoline

Or
.77 homes' energy use for one year:



160 lbs. of reused material were diverted from the landfill

Saving 182 lbs. of CO2 equivalent gasses from entering the atmosphere.

Equivalent to:

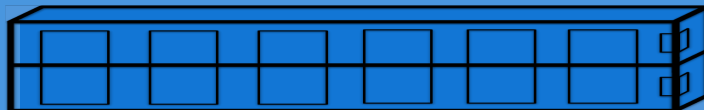
Carbon sequestered by 9 trees grown over 2 years.

Or
.02 passenger cars driven for one year.

Or
9 gallons of gasoline

Or
.01 homes' energy use for one year:

Estimated Volume Diverted from the Landfill



Square Yards Recycling
10.8



Square Yards Compost
13.6



Square Yards Reuse
6.3

Continue Building

27,032.46 lbs.
diverted to
date

2022: 3,649.4 lbs diverted
2021: 1,922.4 lbs diverted
2019: 3,458.7 lbs diverted
2018: 3,108.3 lbs diverted
2017: 2,858.8 lbs diverted
2016: 3,696.3 lbs diverted
2015: 3,378.9 lbs diverted
2014: 2,949.7 lbs diverted
2013: 2,010.0 lbs diverted



*Thank you for helping us make
your event zero waste!*

All vendors, including new vendors all tried to use compostable serviceware for their products and samples helping increase overall diversion rates.

Water re-fill stations helped decrease waste from single-use water bottles!

Attendees were interested in zero waste and did a phenomenal job sorting their materials at resource recovery stations.

Zero Waste Event Productions LLC.

We are the leading recycling, composting, and waste management provider for indoor and outdoor live music events, sporting events, community gatherings and conferences.

If you have any questions regarding this report, please reach out to us.

Contact us Today

9030 Hocking Hills Rd.
The Plains, OH 45780 USA

740 677 4047
info@zerowastefest.com